

Relação do aço

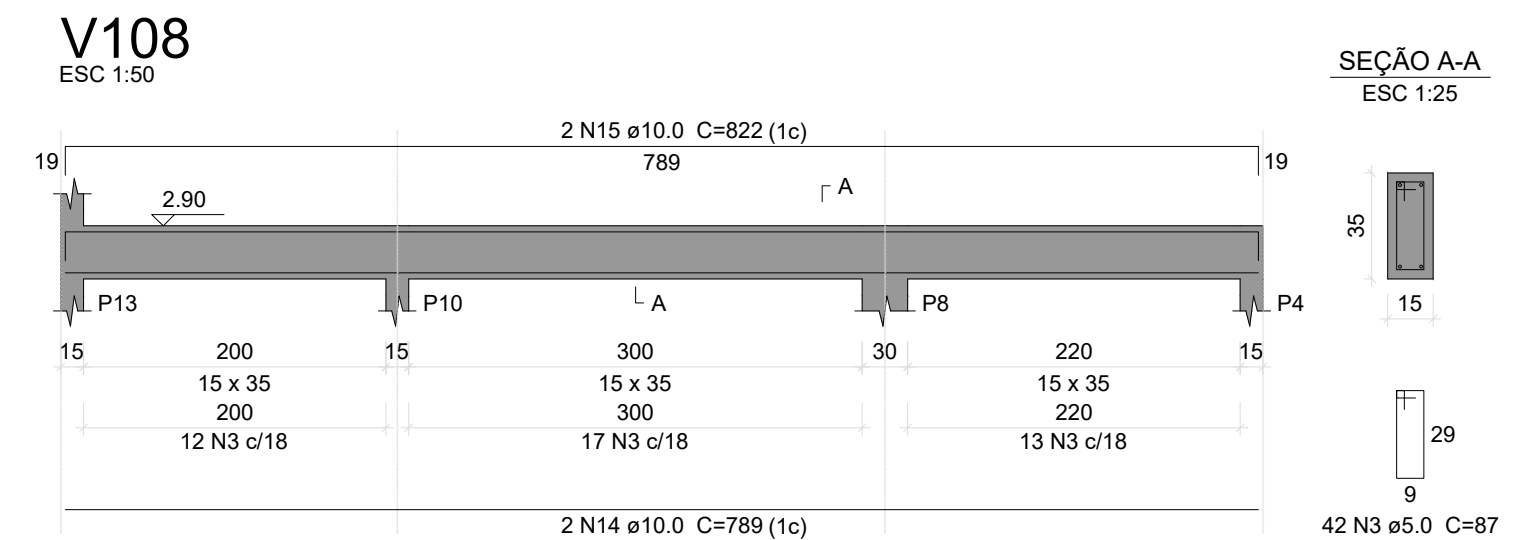
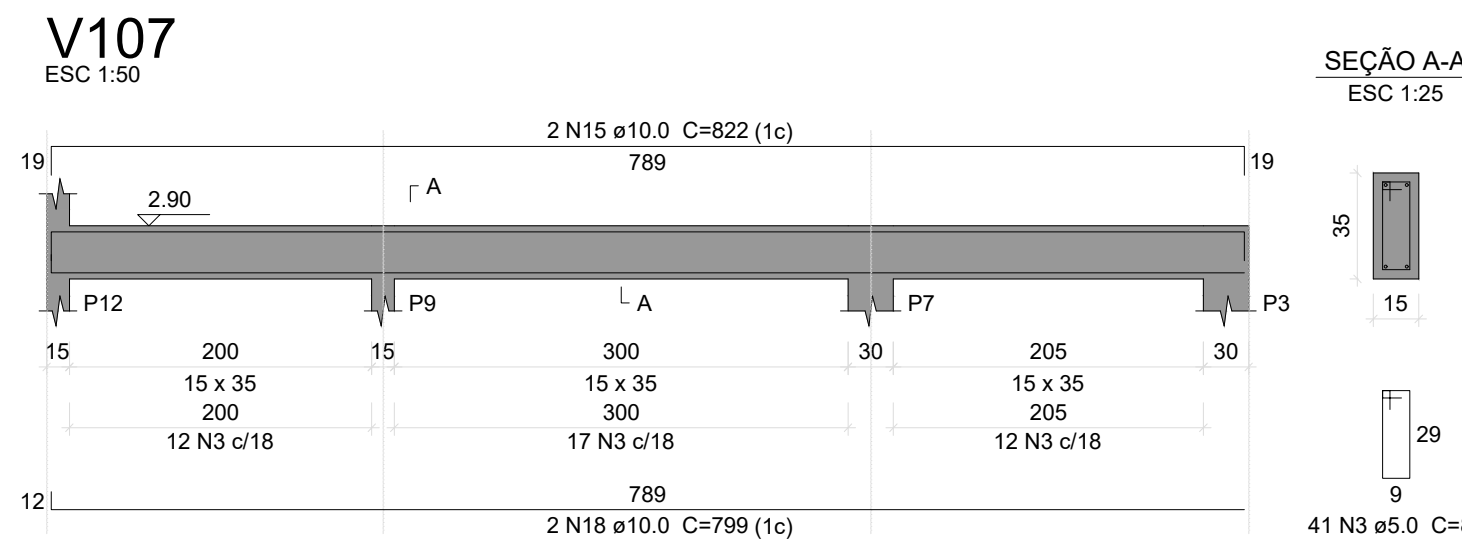
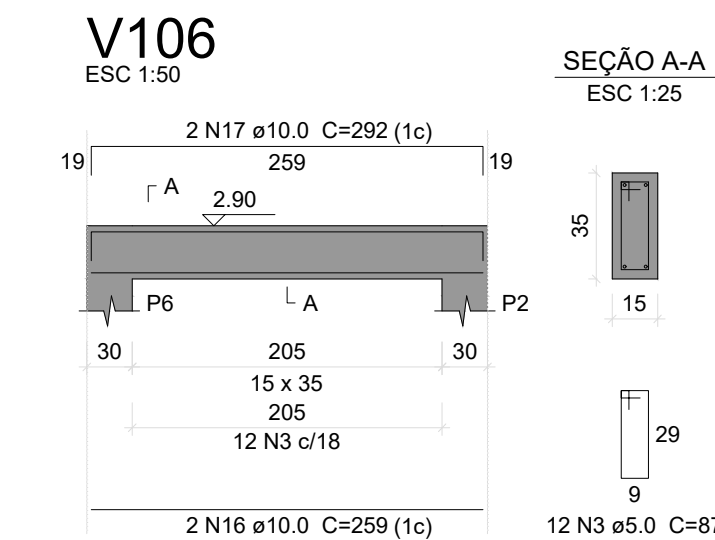
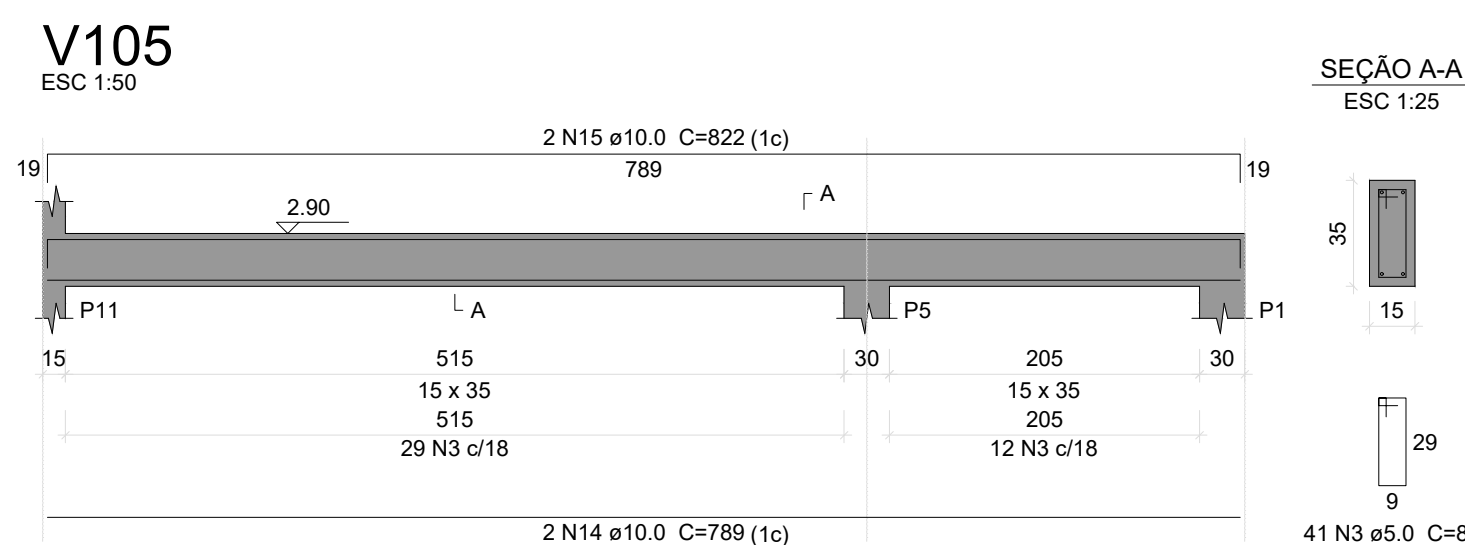
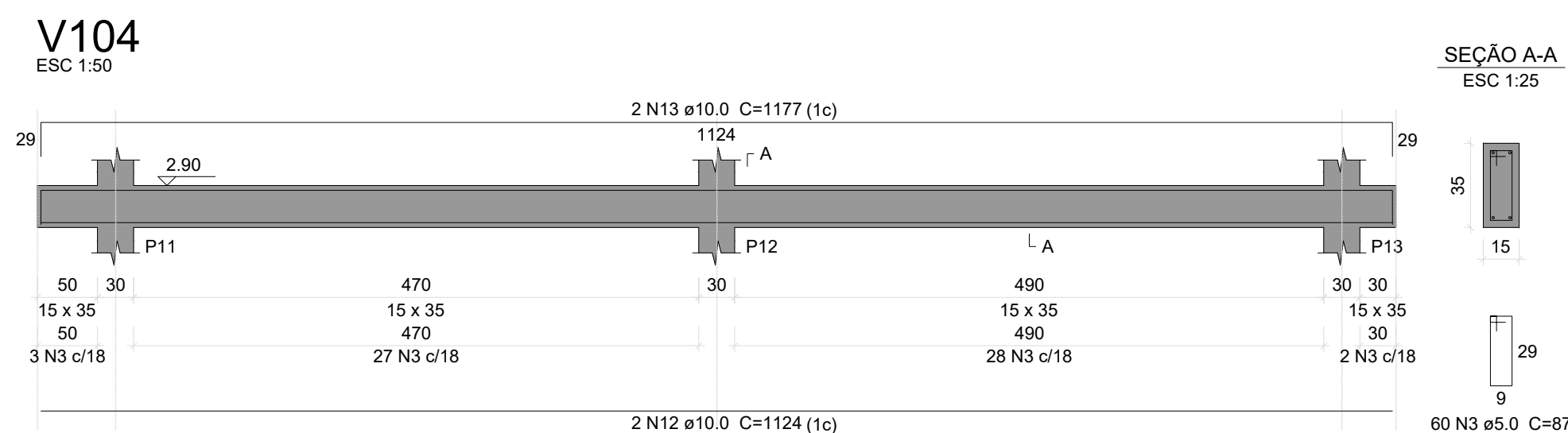
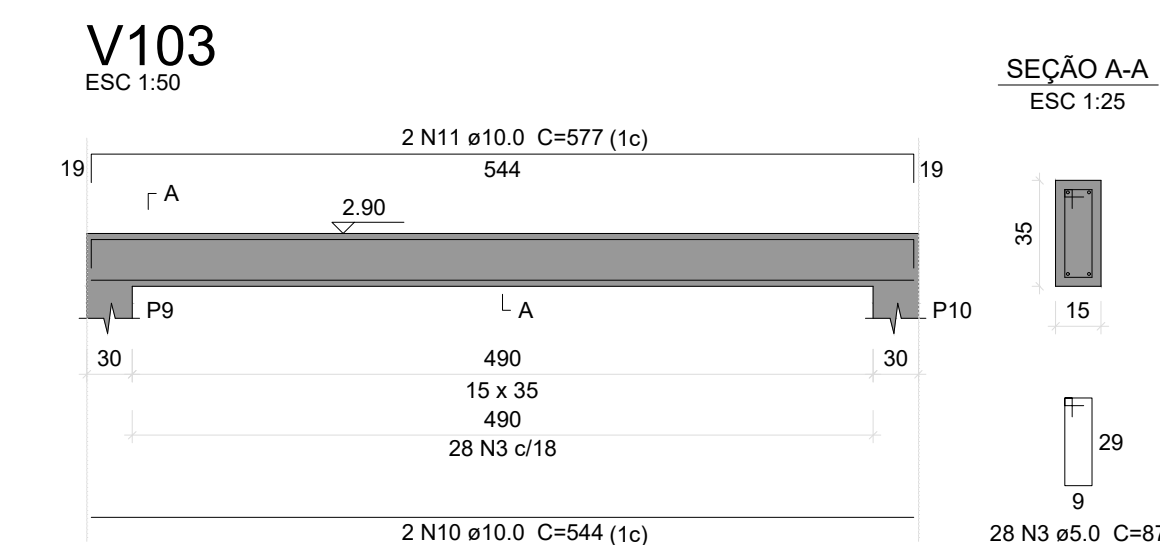
1:	10xP1	3xP11
	Positivos Y	V101
	V102	V103
	V104	V105
	V106	V107
	V108	
2:	3xP11	V201

AÇO	N	DIAM (mm)	QUANT	C.UNIT (cm)	C.TOTAL (cm)
CA60	1	5.0	326	77	25102
	2	5.0	96	54	5184
	3	5.0	367	87	31929
CA50	4	10.0	40	297	11880
	5	10.0	12	338	4056
	6	10.0	2	1044	2088
	7	10.0	2	1077	2154
	8	10.0	2	509	1018
	9	10.0	2	542	1084
	10	10.0	2	544	1088
	11	10.0	2	577	1154
	12	10.0	4	1124	4496
	13	10.0	4	1177	4708
	14	10.0	4	789	3156
	15	10.0	6	822	4932
	16	10.0	2	259	518
	17	10.0	2	292	584
	18	10.0	2	799	1598
	19	10.0	12	137	1644

Resumo do aço

AÇO	DIAM (mm)	C.TOTAL (m)	PESO + 10 % (kg)
CA50	10.0	461.6	313
CA60	5.0	622.2	105.5
PESO TOTAL (kg)			
CA50		313	
CA60		105.5	

Volume de concreto (C-25) = 5.58 m³
Área de forma = 91.83 m²



ARMAÇÃO POSITIVA DAS LAJES DO PAVIMENTO 1 (EIXO Y) PLANTA DE VIGOTAS PRÉ-MOLDADAS

